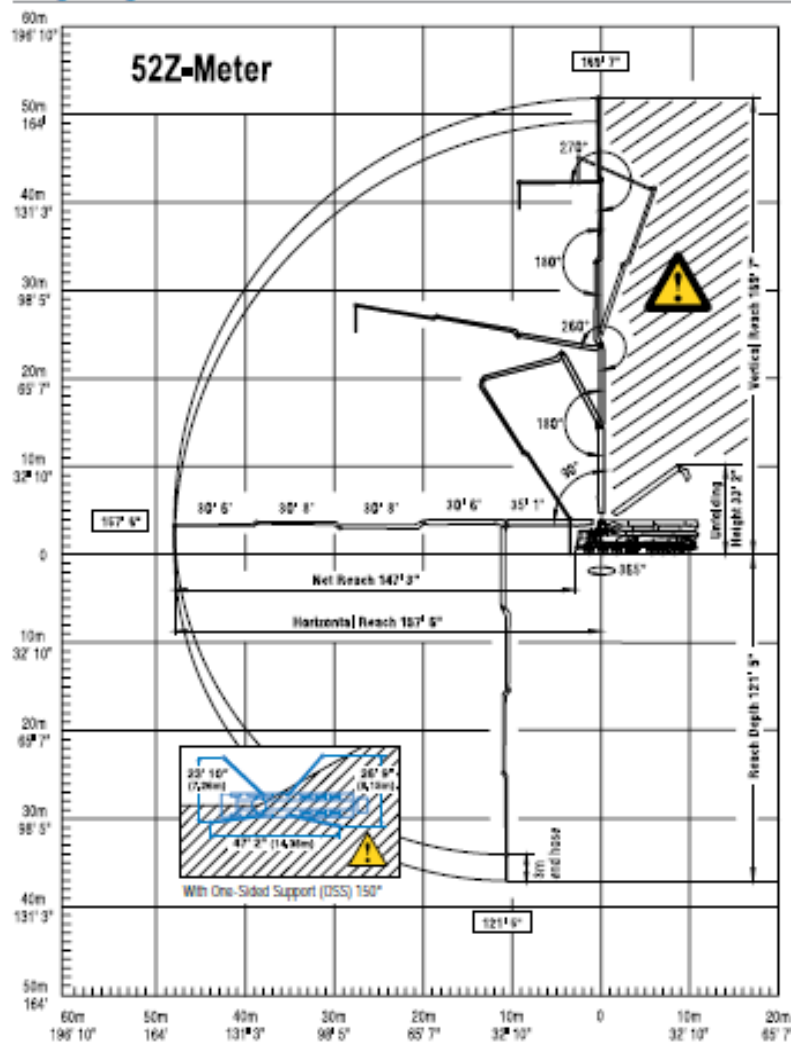
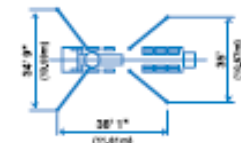


## Range Diagram



End hose not to be operated in caution area.

Photos and drawings are for illustrative purposes only.  
For available options, please refer to price list.



Authorized Distributor



Putzmeister America, Inc.  
1733 90th Street  
Sturtevant, WI 53177 USA  
Telephone (262) 886-3200  
(800) 884-7210  
Facsimile (262) 884-6338  
www.putzmeister.com



## 52Z-Meter Truck-Mounted Specifications

Based on Model MACK MRU 688S  
with 16H pump coil

Length	49' 1"	(14.97m)
Width	8' 2"	(2.50m)
Height	13' 4"	(4.10m)
Wheelbase	349'	(8,865mm)
Front axle weight	54,000 lbs	(24,500kg)
Rear axle weight	51,600 lbs	(23,400kg)
Approx. total weight	105,600 lbs	(47,900kg)

Weights are approximate and include pump, boom, truck, full hydraulic oil, driver and some fuel. Varies with options selected.

Dimensions will vary with different truck makes, models and specifications.

## Boom Specifications • Multi-Z Design

## Height &amp; Reach

Vertical reach	169' 7"	(51.69m)
Horizontal reach	157' 6"	(48.01m)
Reach from front of truck*	147' 3"	(44.88m)
Reach depth	121' 5"	(37.01m)
Unfolding height	33' 2"	(10.11m)

## 5-Section Boom

1st section articulation	90°
2nd section articulation	180°
3rd section articulation	260°
4th section articulation	180°
5th section articulation	270°
1st section length	35' 1" (10.69m)
2nd section length	30' 6" (9.30m)
3rd section length	30' 8" (9.35m)
4th section length	30' 8" (9.35m)
5th section length	30' 6" (9.30m)

## General Specs

Pipeline size (ID) metric ends	5"	(125mm)
Rotation	365°	
End hose — length (heavy-duty)	10'	(3m)
End hose — diameter	5"	(125mm)
Outrigger spread L - R — front swing out & telescope	34' 9"	(10.59m)
Outrigger spread L - R — rear swing out	35'	(10.67m)

Pump Specifications **52Z.16H** **52Z.20H**

Output — rod side	210 yd <sup>3</sup> /hr (160m <sup>3</sup> /hr)	—
piston side	146 yd <sup>3</sup> /hr (112m <sup>3</sup> /hr)	260 yd <sup>3</sup> /hr (200m <sup>3</sup> /hr)
Pressure — rod side	1233 psi (85 bar)	—
piston side	1885 psi (130 bar) • 1233 psi (85 bar)	—
Material cylinder diameter	9" (230mm)	11" (280mm)
Stroke length	83" (2100mm)	83" (2100mm)
Max strokes per minute — rod side	31	—
piston side	21	26
Volume control	0-Full	0-Full
Vibrator	Standard	Standard
Hard-chromed material cylinders	Standard	Standard
Hydraulic system	Free Flow	Free Flow
Hydraulic system pressure	5075 psi (350 bar)	5075 psi (350 bar)
Differential cylinder diameter	5.5" (140mm)	5.5" (140mm)
Rod diameter	3.1" (80mm)	3.1" (80mm)
Maximum size aggregate	2.5" (63mm)	2.5" (63mm)
Water Tank	172 gal (650L)	172 gal (650L)

Maximum theoretical values listed.

\* Applies to units mounted on PMA stock truck — MACK MRU 688S

• Standard delivery line system rated at max line pressure of 1233 psi (85 bar)